

What does skin cancer look like?

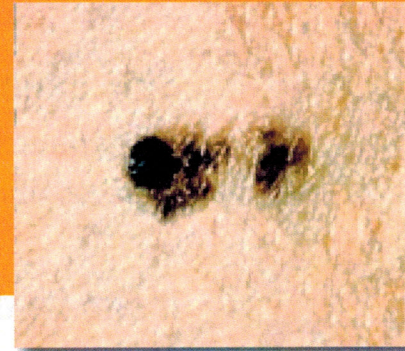
Squamous Cell Carcinoma



Basal Cell Carcinoma



Melanoma



Symptoms of skin cancer vary from person to person but it's important to keep an eye on new moles or spots, including changes to existing moles or spots in size, shape, color, or sensation (for example, itchiness, pain, or tenderness).

It is also helpful to look out for the ABCs of melanoma—these are common characteristics of this type of skin cancer:

- A: Asymmetry—Is one half of the mole or spot unlike the other half?
- B: Border—Are the edges irregular, scalloped, or blurred?
- C: Color—Is there a mixture of different colors?
- D: Diameter—Is the mole or spot wider than a pencil eraser?
- E: Evolution—Is the mole or spot changing in any way?

(American Cancer Society, 2015)

(Photo Credits: National Cancer Institute/Skin Cancer Foundation)

Melanoma



What should I expect if I get screened by Project DERM?

An MD Anderson Cancer Center dermatologist will examine your skin and note any unusual spots, moles, or lesions. The dermatologist may recommend a skin biopsy. A biopsy is a small sample of the skin that will be collected to test for skin cancer. If a biopsy is performed, we will contact you with results and help you find local resources for treatment. **There is no cost for these services.**

What if I have more questions?

Contact Patricia Rivera at:

713-640-2273

8121 Broadway St #103

Houston, TX 77061